

MTX Update Manual

Introduction

On regularly base, new software updates are released for the AUDAC products. These software updates can have the target to fix some software bugs or can add some additional functionality to the devices. We recommend to regularly check for new software updates and make sure that your devices are always running on the latest software version.

The updating process can simply be done via a standard ethernet connection. There is no need for an additional physical connection to the device.

The current software version on which your device is running will be displayed when moving with your mouse cursor over the AUDAC logo in the upper left corner of the web-based user interface.

Every device contains one firmware software program and one website software program. The latest released software versions for the MTX are:

- Firmware version V1.3
- Website version V1.3

The new features and improvements of the software versions are:

MTX Software version V1.2:

Website:

- Bug fixed: Volume could automatically change when the web-interface was opened by multiple web browsers at the same time.
- Added: Configuration possibility for APM104 and APM108 paging microphones

Firmware:

- Bug fixed: Sending wrong Bass and Treble values to web-interface
- Added: Software functionality to configure APM104 and APM108 paging microphones

MTX Software version V1.3:

Website:

- Added: Changing and saving input and output names
- Added: Configuration possibility to change outputs between Mono / Stereo
- Added: Possibility added to change the chime and microphone volume of paging microphones

Firmware:

- Added: Possibility to save and load input and output names
- Added: Command for Mono / Stereo switching of the outputs
- Added: Possibility to have three simultaneous TCP/IP connections, instead of two

To complete this update procedure, the currently set IP address for the MTX should be known. The factory default IP address for the MTX is “192.168.0.192”. When the IP address is changed and unknown to you, the MTX will be lost in your network. The IP address can be traced by running the “Ethernet Discoverer” tool, which is included in the *.zip package of with this manual.

MTX Firmware Update

This manual guides you through the procedure to update the firmware for the MTX.
The software tool required to complete this firmware update is standard windows Command Prompt.

Step 1:

Make sure the MTX is connected to an Ethernet LAN network by using a 'Straight' networking cable, or connect it directly to a computer by using a 'Crosslink' networking cable.

Step 2:

Open the windows Command Prompt, and enter the following command:

"tftp 192.168.0.192 put c:\MTXV1_3conv.hex"

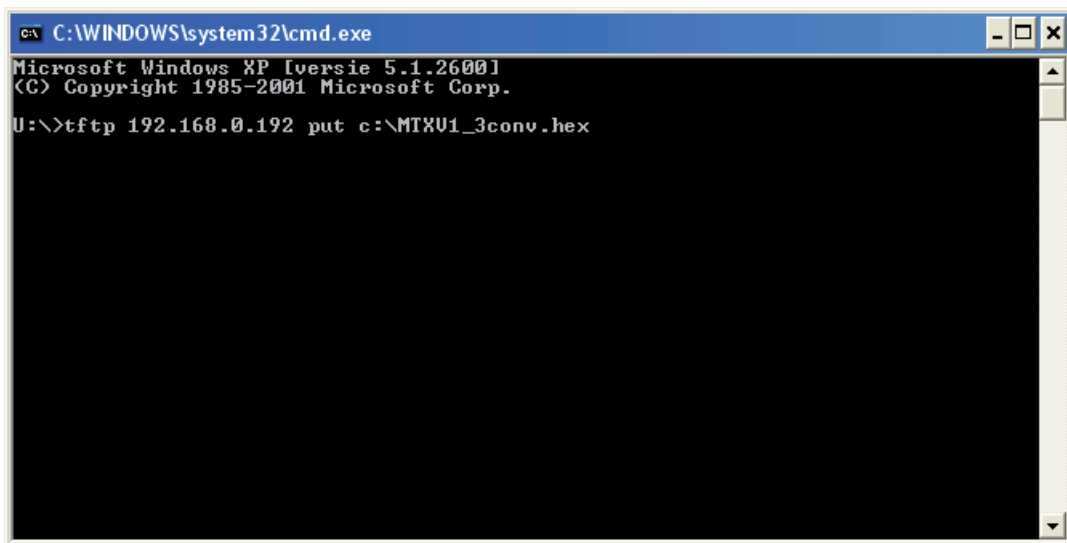
*(The IP address should be replaced with the IP address of the MTX unit which must be updated. 192.168.0.192 is the factory default IP address for the MTX. The file path should be replaced with the file path on which location the update file for MTX is stored on your computer. The update file is included in the *.zip package with this manual)*

NOTE

When using Windows 7, the tftp services should be enabled in the windows configuration screen.

Step 3:

The update file will be transferred to the MTX unit. This will take several seconds.
Make sure that the power supply isn't interrupted until the update process is completed.

A screenshot of a Windows XP Command Prompt window. The title bar reads "C:\WINDOWS\system32\cmd.exe". The window content shows the following text: "Microsoft Windows XP [versie 5.1.2600] (C) Copyright 1985-2001 Microsoft Corp. U:\>tftp 192.168.0.192 put c:\MTXV1_3conv.hex". The command prompt is currently on the line following the entered command.

```
C:\WINDOWS\system32\cmd.exe
Microsoft Windows XP [versie 5.1.2600]
(C) Copyright 1985-2001 Microsoft Corp.
U:\>tftp 192.168.0.192 put c:\MTXV1_3conv.hex
```

MTX Firmware update by using windows Command Prompt

MTX Website Update

This manual guides you through the procedure to update the website for the MTX.
The software tool required to complete this website update is included in the *.zip package with this user manual.

Step 1:

Make sure the MTX is connected to an Ethernet LAN network by using a 'Straight' networking cable, or connect it directly to a computer by using a 'Crosslink' networking cable.

Step 2:

Run the software tool “MPFS2.exe” (included in the *.zip package with this user manual)

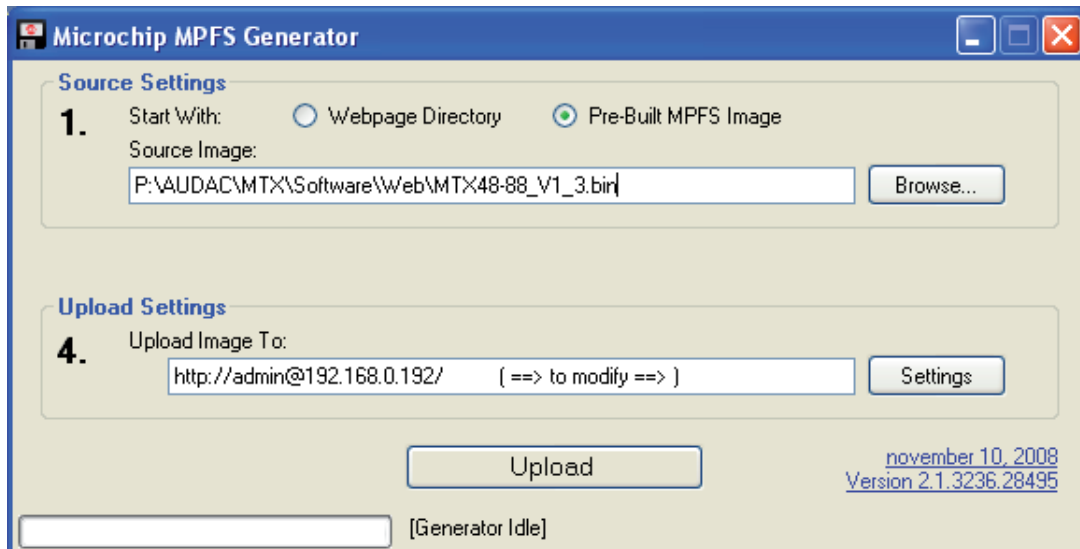
In the first field (point 1): Source Settings, following settings should be selected:

- Pre-Built MPFS Image
- Select the path to the *.bin website file which is included with the *.zip package with this user manual. (For the website version V1.3, this filename is “MTX48-88_V1_3.bin”)

The fields two and three will disappear when “Pre-Built MPFS Image” is selected

In the second field (point 4): Upload Settings, the following settings should be set:

- Click the settings button, and enter the MTX IP address in the “DeviceAddress” field. (Default IP: 192.168.0.192)
- All other fields should remain on their standard set value

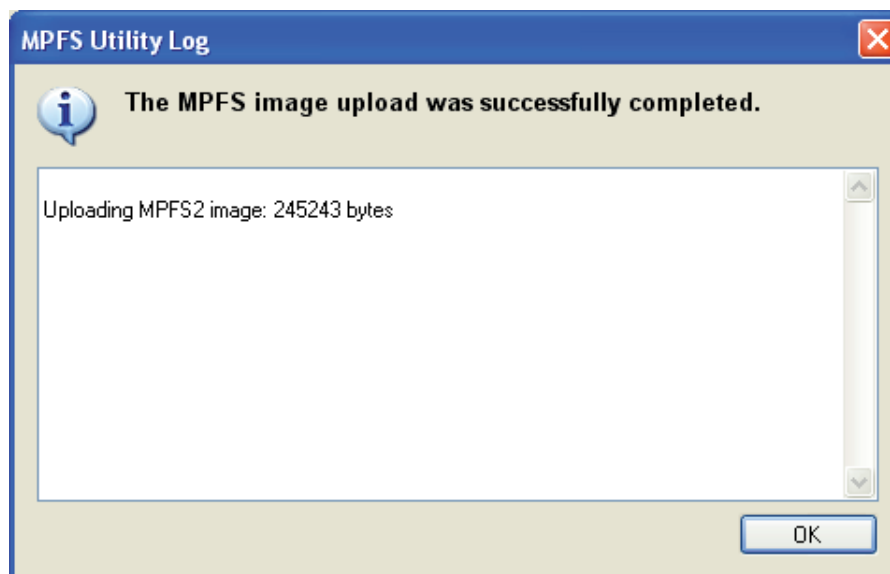


MTX Website update by using “Microchip MPFS Generator”

Step 3:

Press the “Upload” button to start uploading the new website.

If the upload was successful, the screen and text below will be shown:



This screen will be shown after the website update is successful.

Step 4:

The website update is now finished. Clear your web-browser cache before reloading the web-site. When the web-browser cache isn't cleared, your web-browser will reload the old website from his cache memory.